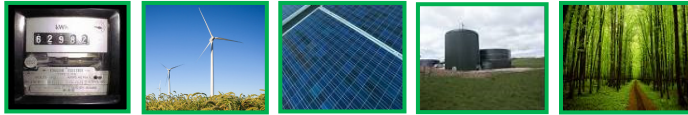


Energy Efficiency and Monitoring Service



from Laurence Gould



Laurence Gould Partnership Ltd. has over 40 years experience of delivering advice to rural businesses and organisations including the RSPB, National Trust, Natural England, DEFRA and Business Link.

Our professional environmental consultancy team have teamed up with an innovative energy efficiency company to offer a comprehensive energy efficiency service. Using **advanced remote energy metering** technology, software and our professional expertise, we are able to offer you incredibly detailed, **real-time energy consumption information**— down to **individual appliances** if required.

We can use this to **offer you detailed, pragmatic advice** on short to long term energy efficiency measures and management practices. This will allow you to see year on year costs, make **significant reductions - usually between 10%-25% - from your bills** and make informed investment decisions...

Your electricity bill is not a fixed cost...

Remote, wireless and real-time site monitoring

*

Detailed analysis down to individual appliances

*

Delivery of savings of up to 10-25% on energy bills

*

Clip-on installation and unobtrusive operation

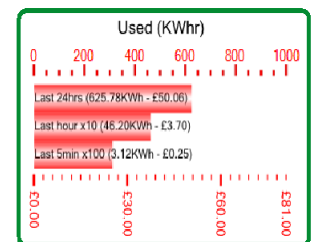
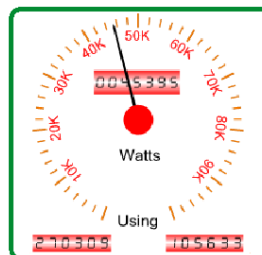
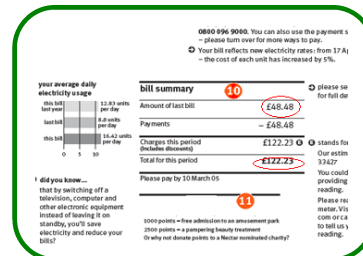
*

Ongoing energy management advice and efficiency plans.

*

Identification of faulty or underperforming appliances

*



For an initial, no obligation discussion about this or our other environmental services, please contact:

Paul Holmes-Ling	Paul@laurencegould.com	01444 232822	Southern
Ewan Delany	Ewan@laurencegould.com	01223 813622	East and Midlands
Robert Schiller	Robert@laurencegould.com	0131 3313431	North and Scotland

www.laurencegould.com